

ND/QL Series DTH Hammer with foot valve

ND/QL 有尾管系列冲击器

装配带尼龙管钻头的高风压潜孔冲击器是我公司自行设计的无阀高压冲击器
It is a kind of high air pressure DTH hammer with foot valve.

其主要特点如下:

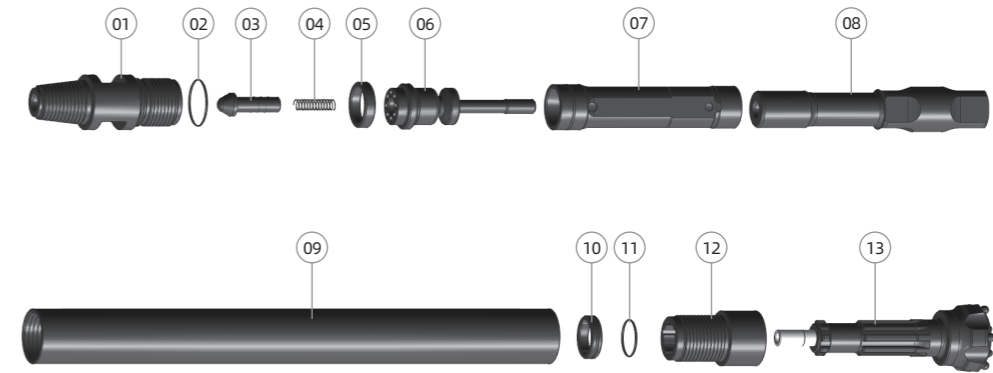
- 采用无阀方式配气, 配气可靠。
- 活塞构造简单, 不易损坏。
- 能量传递理想, 钻进速度快, 耗气量小, 油耗低。
- 所用部件少, 结构简单, 加上各部件均硬化处理, 因此, 工作寿命长, 故障少, 维修方便。
- 接头和卡钎套采用螺纹与外缸联接, 拆卸容易。

The main features are as following:

- Valveless air distribution. More reliable.
- Simple design of the piston. long life span.
- More efficient energy transfer, faster drilling speed, lower air consumption and lower oil consumption.
- Fewer internal parts, simple structure, long life span, less failure and easier to maintain because all the parts are heat treated.
- Easy to disassemble because the top sub, the drive chuck and the external cylinder are connected by multiple steps thread.



DHD3.5

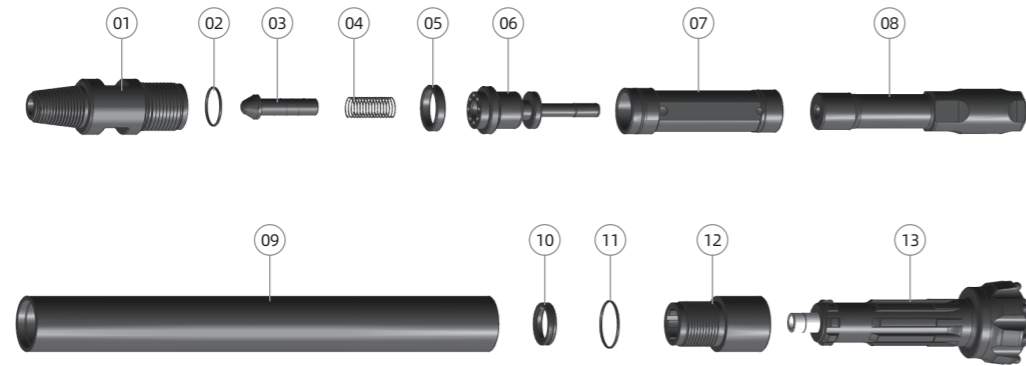


Ref.	部件 Parts	单重 Weight	件号 Part No.	Ref.	部件 Parts	单重 Weight	件号 Part No.
01	接头 Top Sub	4.4 Kg	01-DHD3.5-01	09	外缸 External Cylinder	9.5 Kg	01-DHD3.5-09
02	O形圈 "O" Ring	0.01 Kg	01-DHD3.5-02	10	卡环 Stop Ring	0.1 Kg	01-DHD3.5-10
03	逆止阀 Check Valve	0.2 Kg	01-DHD3.5-03	11	O形圈 O Ring of Top Sub	0.01 Kg	01-DHD3.5-11
04	弹簧 Spring	0.02 Kg	01-DHD3.5-04	12	卡钎套 Drive Chuck	2.1 Kg	01-DHD3.5-12
05	承压垫 Compression Buffer	0.02 Kg	01-DHD3.5-05	13	钻头 Drill Bit		01-DHD3.5-13
06	配气座 Air Distribution	1.4 Kg	01-DHD3.5-06				
07	内缸 Inner Cylinder	1.7 Kg	01-DHD3.5-07				
08	活塞 Piston	5.6 Kg	01-DHD3.5-08				

技术参数 / Technical parameters

总长 (不含钻头) Length(Without Bit)	总重 Weight	冲击器外径 Length(Without Bit)	接头螺纹 Connection Thread	钻头钎柄 Bit Shank	钻孔范围 Hole Range
928mm	25Kg	φ 82mm	API2 3/8"REG	DHD3.5	φ 90- φ 110mm
工作风压 working pressure		推荐转速 Recommended rotation speed		耗风量/Air Consumption	
1.0-1.7 Mpa		30-60 r/min		1.0Mpa	1.5Mpa
				4.5m ³ /min	8.5m ³ /min

DHD340

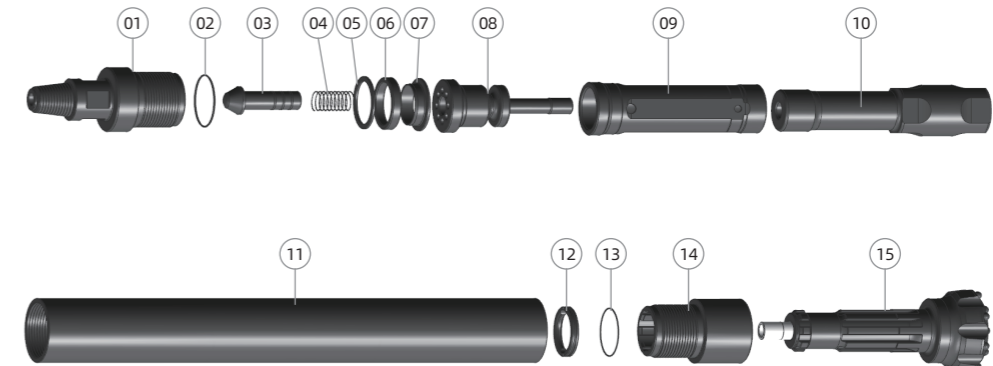


Ref.	部件 Parts	单重 Weight	件号 Part No.	Ref.	部件 Parts	单重 Weight	件号 Part No.
01	接头 Top Sub	8.8 Kg	01-DHD340-01	09	外缸 External Cylinder	15.9 Kg	01-DHD340-09
02	O形圈 "O"Ring	0.01 Kg	01-DHD340-02	10	卡环 Stop Ring	0.2 Kg	01-DHD340-10
03	逆止阀 Check Valve	0.46 Kg	01-DHD340-03	11	O形圈 "O"Ring	0.01 Kg	01-DHD340-11
04	弹簧 Spring	0.04 Kg	01-DHD340-04	12	卡钎套 Drive Chuck	3.7 Kg	01-DHD340-12
05	承压垫 Compression Buffer	0.2 Kg	01-DHD340-05	13	钻头 Drill Bit		01-DHD340-13
06	配气座 Air Distribution	2.1 Kg	01-DHD340-06				
07	内缸 Internal Cylinder	2.45 Kg	01-DHD340-07				
08	活塞 Piston	9 Kg	01-DHD340-08				

技术参数 / Technical parameters

总长 (不含钻头) Length(Less bit)	总重 Weight	冲击器外径 Outer diameter	接头螺纹 Connection Thread	钻头钎柄 Bit Shank	钻孔范围 Hole Range
1032mm	43Kg	φ 99mm	API2 3/8"REG	DHD340	φ 110- φ 135mm
适用气压 Work Pressure		推荐转速 Recommended rotation speed		耗风量/Air Consumption	
1.0-2.2 Mpa		30-60 r/min		1.0Mpa	1.8Mpa
1.0-2.2 Mpa		30-60 r/min		5.5m ³ /min	10m ³ /min

DHD350

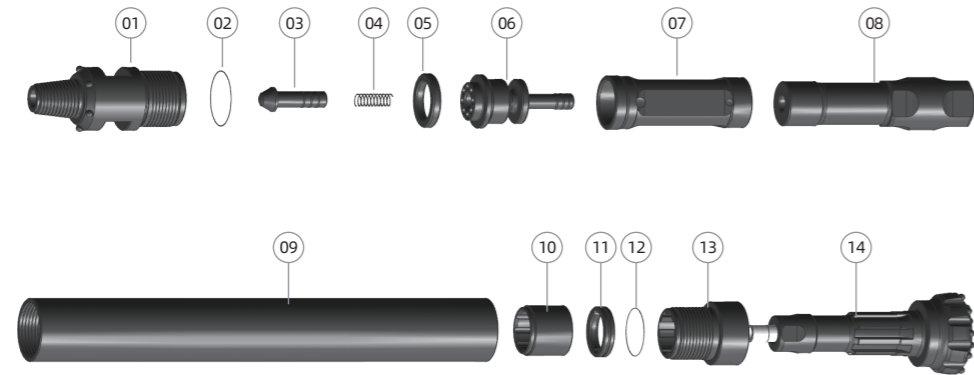


Ref.	部件 Parts	单重 Weight	件号 Part No.	Ref.	部件 Parts	单重 Weight	件号 Part No.
01	接头 Top Sub	14.7 Kg	01-DHD350-01	09	内缸 Inner Cylinder	4.9 Kg	01-DHD350-09
02	O形圈 "O"Ring	0.02 Kg	01-DHD350-02	10	活塞 Piston	15.5 Kg	01-DHD350-10
03	逆止阀 Check Valve	1 Kg	01-DHD350-03	11	外缸 Piston Case	30.3 Kg	01-DHD350-11
04	弹簧 Spring	0.06 Kg	01-DHD350-04	12	卡环 Retainer Ringk	0.3 Kg	01-DHD350-12
05	调整圈 regulate ring	0.1 Kg	01-DHD350-05	13	O形圈 "O"Ring	0.01 Kg	01-DHD350-13
06	橡胶垫 rubber Buffer	0.06 Kg	01-DHD350-06	14	卡钎套 Drive Chuck	7.1 Kg	01-DHD350-14
07	垫座 pedestal	0.2 Kg	01-DHD350-07	15	钻头 Drill Bit		01-DHD350-15
08	配气座 Valve Sea	4.2 Kg	01-DHD350-08				

技术参数 / Technical parameters

总长 (不含钻头) Length(Less bit)	总重 Weight	冲击器外径 Outer diameter	接头螺纹 Connection Thread	钻头钎柄 Bit Shank	钻孔范围 Hole Range
1209mm	78.5Kg	φ 125mm	API2 3/8"REG	DHD350	φ 135- φ 155mm
适用气压 Work Pressure		推荐转速 Recommended rotation speed		耗风量/Air Consumption	
1.0-2.5 Mpa		30-60 r/min		1.0Mpa	1.8Mpa
1.0-2.5 Mpa		30-60 r/min		9m ³ /min	15m ³ /min

DHD360

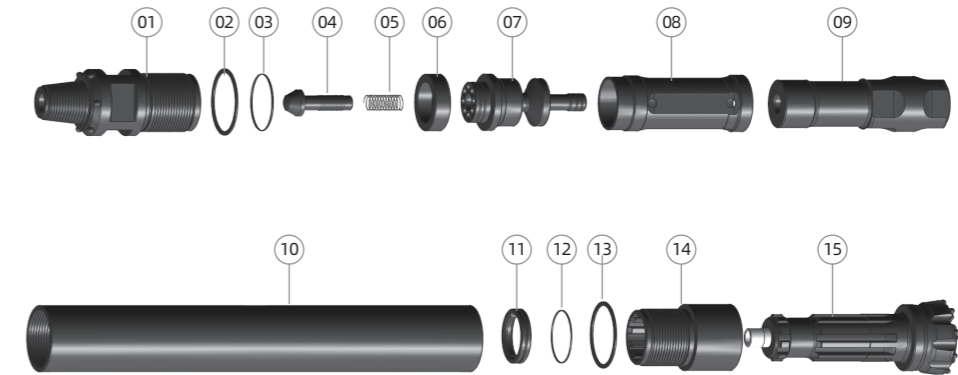


Ref.	部件 Parts	单重 Weight	件号 Part No.	Ref.	部件 Parts	单重 Weight	件号 Part No.
01	接头 Top Sub	20.3 Kg	01-ND45A-01	09	外缸 Piston Case	37.2 Kg	01-DHD360-09
02	O形圈 "O"Ring	0.02 Kg	01-ND45A-02	10	衬套 Guided Sleeve	2.5 Kg	01-DHD360-10
03	逆止阀 Check Valve	0.8 Kg	01-ND45A-03	11	卡环 Retainer Ring	0.6 Kg	01-DHD360-11
04	弹簧 Spring	0.05 Kg	01-ND45A-04	12	O形圈 "O"Ring	0.02 Kg	01-DHD360-12
05	配气座 Valve Seat	0.3 Kg	01-ND45A-05	13	卡钎套 Drive Chuck	6 Kg	01-DHD360-13
06	内缸 Inner Cylinder	5 Kg	01-ND45A-06	14	钻头 Drill Bit		01-DHD360-14
07	活塞 Piston	4 Kg	01-ND45A-07				
08	外缸 Piston Case	23.5 Kg	01-ND45A-08				

技术参数 / Technical parameters

总长 (不含钻头) Length(Less bit)	总重 Weight	冲击器外径 Outer diameter	接头螺纹 Connection Thread	钻头钎柄 Bit Shank	钻孔范围 Hole Range
1063mm	100.5Kg	φ 142mm	API3 1/2"REG	DHD360	φ 150- φ 190mm
适用气压 Work Pressure	推荐转速 Recommended rotation speed	耗风量 / Air Consumption			
		1.0Mpa	1.8Mpa		
1.0-2.5 Mpa	30-60 r/min	9m ³ /min	20m ³ /min		

DHD380

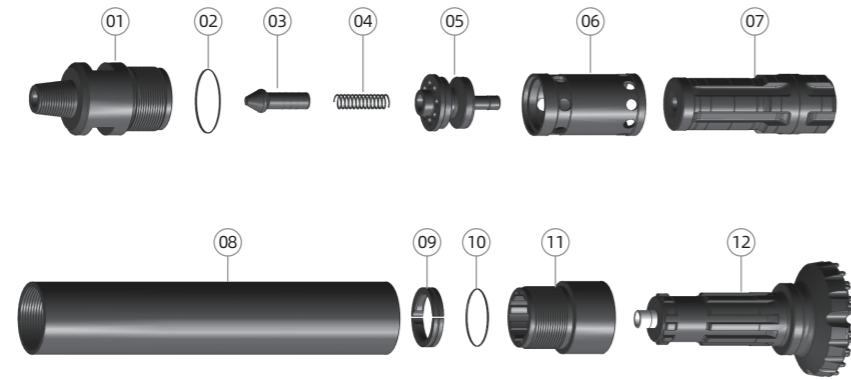


Ref.	部件 Parts	单重 Weight	件号 Part No.	Ref.	部件 Parts	单重 Weight	件号 Part No.
01	接头 Top Sub	42 Kg	01-DHD380-01	09	活塞 Piston	41.5 Kg	01-DHD380-09
02	垫片 Adjuster Shim	0.2 Kg	01-DHD380-02	10	外缸 Piston Case	62.5 Kg	01-DHD380-10
03	O形圈 "O"Ring	0.02 Kg	01-DHD380-03	11	卡环 Retainer Ring	1.2 Kg	01-DHD380-11
04	逆止阀 Check Valve	1.3 Kg	01-DHD380-04	12	O形圈 "O"Ring	0.02 Kg	01-DHD380-12
05	弹簧 Spring	0.09 Kg	01-DHD380-05	13	垫片 Adjuster Shim	0.2 Kg	01-DHD380-13
06	橡胶垫 rubber Buffer	0.4 Kg	01-DHD380-06	14	卡钎套 Drive Chuck	18.2 Kg	01-DHD380-14
07	配气座 Valve Sea	13 Kg	01-DHD380-07	15	钻头 Drill Bit		01-DHD380-15
08	内缸 Inner Cylinder	9.1 Kg	01-DHD380-08				

技术参数 / Technical parameters

总长 (不含钻头) Length(Less bit)	总重 Weight	冲击器外径 Outer diameter	接头螺纹 Connection Thread	钻头钎柄 Bit Shank	钻孔范围 Hole Range
1492mm	190Kg	φ 180mm	API4 1/2"REG	DHD380	φ 195- φ 254mm
适用气压 Work Pressure	推荐转速 Recommended rotation speed	耗风量 / Air Consumption			
		1.8Mpa	2.4Mpa		
1.5-3.3 Mpa	30-60 r/min	26m ³ /min	34m ³ /min		

NUMA100

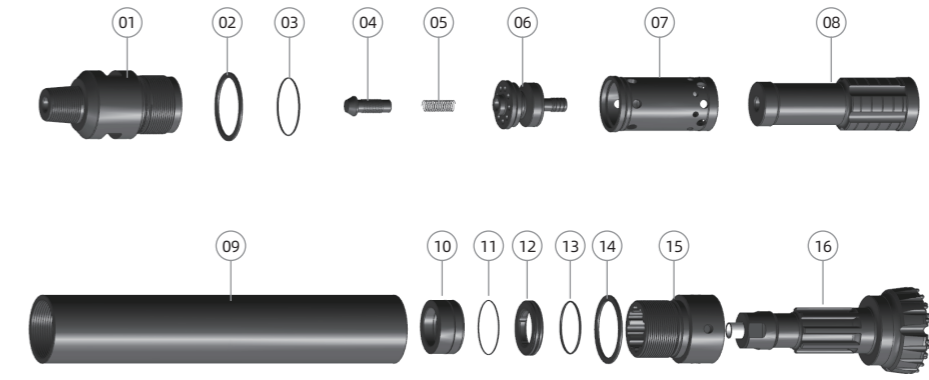


Ref.	部件 Parts	单重 Weight	件号 Part No.	Ref.	部件 Parts	单重 Weight	件号 Part No.
01	接头 Top Sub	60 kg	01-NUMA100-01	09	卡环 Retainer Ring	2.2 kg	01-NUMA100-09
02	O形圈 "O"Ring	0.03 kg	01-NUMA100-02	10	O形圈 "O"Ring	0.02 kg	01-NUMA100-10
03	逆止阀 Check Valve	1.5 kg	01-NUMA100-03	11	卡钎套 Drive Chuck	27 kg	01-NUMA100-11
04	弹簧 Spring	0.2 kg	01-NUMA100-04	12	钻头 Drill Bit		01-NUMA100-12
05	配气座 Valve Seat	12.8 kg	01-NUMA100-05				
06	内缸 Inner Cylinder	13.5 kg	01-NUMA100-06				
07	活塞 Piston	71 kg	01-NUMA100-07				
08	外缸 Piston Case	94.5 kg	01-NUMA100-08				

技术参数 / Technical parameters

总长 (不含钻头) Length(Less bit)	总重 Weight	冲击器外径 Outer diameter	接头螺纹 Connection Thread	钻头钎柄 Bit Shank	钻孔范围 Hole Range
1432mm	283Kg	φ 225mm	API5 1/2"REG	NUMA100	φ 254- φ 311mm
适用气压 Work Pressure		推荐转速 Recommended rotation speed		耗风量/Air Consumption	
1.5-3.3 Mpa		30 ~ 55 r/min		1.8Mpa	2.4Mpa
1.5-3.3 Mpa		30 ~ 55 r/min		40m ³ /min	60m ³ /min

DHD1120

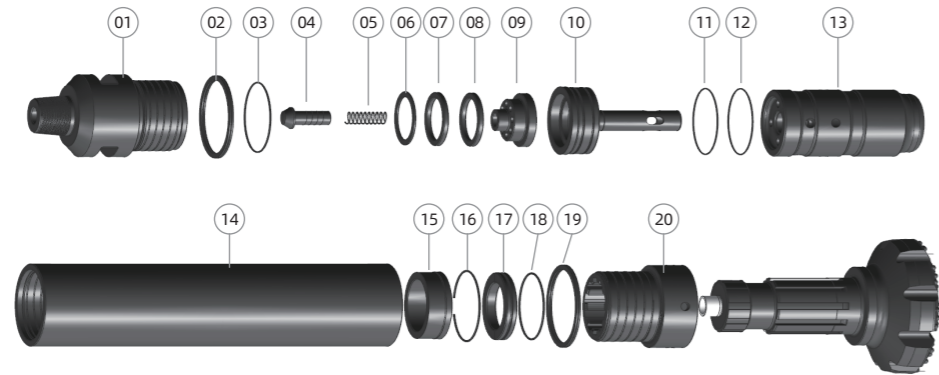


Ref.	部件 Parts	单重 Weight	件号 Part No.	Ref.	部件 Parts	单重 Weight	件号 Part No.
01	接头 Top Sub	134 kg	01-DHD1120-01	09	外缸 Piston Case	220 Kg	01-DHD1120-09
02	垫片 Adjuster Shim	0.8 kg	01-DHD1120-02	10	衬套 Guided Sleeve	12 Kg	01-DHD1120-10
03	O形圈 "O"Ring	0.04 kg	01-DHD1120-03	11	挡圈 Check Ring	0.25 Kg	01-DHD1120-11
04	逆止阀 Check Valve	1.5 kg	01-DHD1120-04	12	卡环 Retainer Ring	5.2 Kg	01-DHD1120-12
05	弹簧 Spring	0.2 kg	01-DHD1120-05	13	O形圈 "O"Ring	0.04 Kg	01-DHD1120-13
06	配气座 Valve Seat	21 kg	01-DHD1120-06	14	垫片 Adjuster Shim	1.2 Kg	01-DHD1120-14
07	内缸 Inner Cylinder	29 kg	01-DHD1120-07	15	卡钎套 Drive Chuck	53.5 Kg	01-DHD1120-15
08	活塞 Piston	119 kg	01-DHD1120-08	16	钻头 Drill Bit		01-DHD1120-16

技术参数 / Technical parameters

总长 (不含钻头) Length(Less bit)	总重 Weight	冲击器外径 Outer diameter	接头螺纹 Connection Thread	钻头钎柄 Bit Shank	钻孔范围 Hole Range
1845mm	598Kg	φ 275mm	API6 5/8"REG	DHD1120	φ 295- φ 400mm
适用气压 Work Pressure		推荐转速 Recommended rotation speed		耗风量/Air Consumption	
1.5-3.3 Mpa		30 ~ 55 r/min		1.8Mpa	2.4Mpa
1.5-3.3 Mpa		30 ~ 55 r/min		50m ³ /min	70m ³ /min

N125

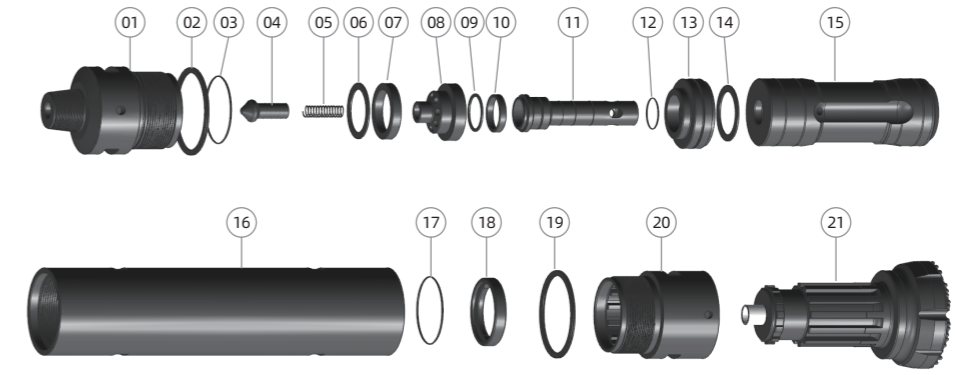


Ref.	部件 Parts	单重 Weight	件号 Part No.	Ref.	部件 Parts	单重 Weight	件号 Part No.
01	接头 Top Sub	163.5 Kg	01-N125-01	11	O形圈 "O"Ring	0.03 Kg	01-N125-11
02	垫圈 Washer	1.5 Kg	01-N125-02	12	O形圈 "O"Ring	0.03 Kg	01-N125-12
03	O形圈 "O"Ring	0.03 Kg	01-N125-03	13	活塞 Piston	154 Kg	01-N125-13
04	逆止阀 Check Valve	1.5 Kg	01-N125-04	14	外缸 Piston Case	246.5Kg	01-N125-14
05	弹簧 Spring	0.2 Kg	01-N125-05	15	衬套 Cuided Sleeve	12.7 Kg	01-N125-15
06	垫片 Adjuster Shim	0.7 Kg	01-N125-06	16	挡圈 Check Ring	0.2 Kg	01-N125-16
07	橡胶垫rubber Buffer	0.3 Kg	01-N125-07	17	卡环 Retainer Ring	7 Kg	01-N125-17
08	橡胶垫rubber Buffer	0.3 Kg	01-N125-08	18	O形圈 "O"Ring	0.3 Kg	01-N125-18
09	配气座 Valve Seat	11.8 Kg	01-N125-09	19	垫圈 Washer	1.5 Kg	01-N125-19
10	配气杆 Rigid Valve	27.4 Kg	01-N125-10	20	卡钎套 Driver Chuck	68.5 Kg	01-N125-20

技术参数 / Technical parameters

总长 (不含钻头) Length(Less bit)	总重 Weight	冲击器外径 Outer diameter	接头螺纹 Connection Thread	钻头钎柄 Bit Shank	钻孔范围 Hole Range
1785mm	698Kg	φ 305mm	API6 5/8"REG	NUMA125	φ 330- φ 400mm
适用气压 Work Pressure	1.5-3.3 Mpa	推荐转速 Recommended rotation speed	25 ~ 45 r/min	耗风量 / Air Consumption	
				1.8Mpa	2.4Mpa
46m ³ /min		58m ³ /min			

YC410

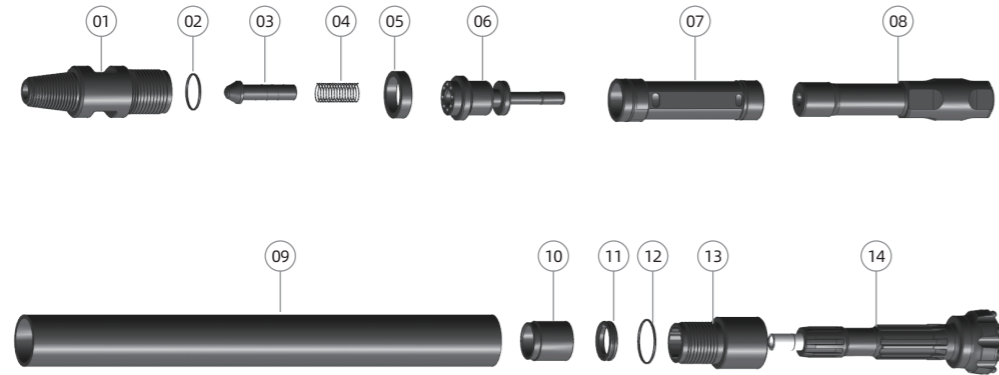


Ref.	部件 Parts	单重 Weight	件号 Part No.	Ref.	部件 Parts	单重 Weight	件号 Part No.
01	接头 Top Sub	274 Kg	01-YC410-01	12	O形圈 "O"Ring	0.03 Kg	01-YC410-12
02	垫片 Adjuster Shim	2.9 Kg	01-YC410-02	13	杆座 Pole seat	50 Kg	01-YC410-13
03	O形圈 "O"Ring	0.03 Kg	01-YC410-03	14	O形圈 "O"Ring	0.03 Kg	01-YC410-14
04	逆止阀 Check Valve	3.4 Kg	01-YC410-04	15	活塞 Piston	347 Kg	01-YC410-15
05	弹簧 Spring	0.3 Kg	01-YC410-05	16	外缸 Piston Case	562 Kg	01-YC410-16
06	调整圈regulate ring	1.5 Kg	01-YC410-06	17	挡圈 Check Ring	0.3 Kg	01-YC410-17
07	尼龙垫 Nylon washer	1.2 Kg	01-YC410-07	18	卡环 Retainer Ring	10 Kg	01-YC410-18
08	配气座 Valve Seat	26.4 Kg	01-YC410-08	19	垫片 Adjuster Shim	2.9 Kg	01-YC410-19
09	调整圈regulate ring	0.4 Kg	01-YC410-09	20	卡钎套 Drive Chuck	155 Kg	01-YC410-20
10	橡胶垫rubber Buffer	0.3 Kg	01-YC410-10	21	钻头 Drill Bit		01-YC410-21
11	配气杆 Rigid Valve	22.3 Kg	1-YC410-110				

技术参数 / Technical parameters

总长 (不含钻头) Length(Less bit)	总重 Weight	冲击器外径 Outer diameter	接头螺纹 Connection Thread	钻头钎柄 Bit Shank	钻孔范围 Hole Range
2162mm	1460Kg	φ 410mm	API8 5/8"REG	N180	φ 295- φ 400mm
适用气压 Work Pressure	1.5-3.5 Mpa	推荐转速 Recommended rotation speed	25 ~ 40 r/min	耗风量 / Air Consumption	
				1.8Mpa	2.4Mpa
63m ³ /min		85m ³ /min			

QL40

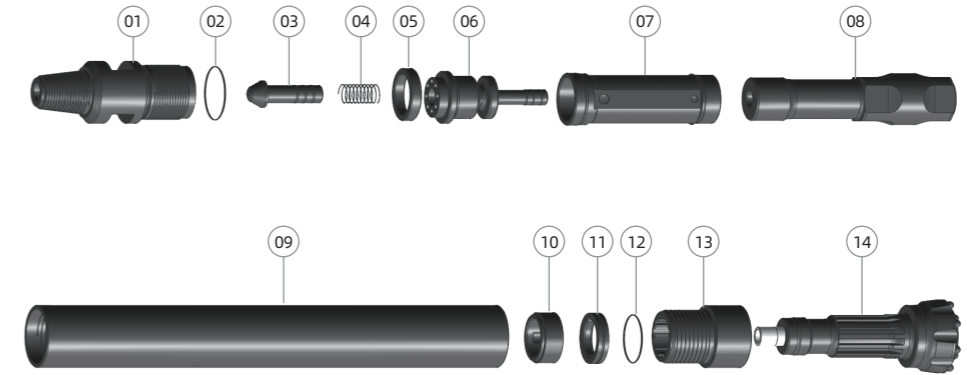


Ref.	部件 Parts	单重 Weight	件号 Part No.	Ref.	部件 Parts	单重 Weight	件号 Part No.
01	接头 Top Sub	8.8 Kg	01-QL40-01	09	外缸 Piston Case	16.5 Kg	01-QL40-09
02	O形圈 "O"Ring	0.01 Kg	01-QL40-02	10	衬套 Guided Sleeve	0.9 Kg	01-QL40-10
03	逆止阀 Check Valve	0.46 Kg	01-QL40-03	11	卡环 Retainer Ring	0.2 Kg	01-QL40-11
04	弹簧 Spring	0.04 Kg	01-QL40-04	12	O形圈 "O"Ring	0.01 Kg	01-QL40-12
05	橡胶垫rubber Buffer	0.2 Kg	01-QL40-05	13	卡钎套 Drive Chuc	3.3 Kg	01-QL40-13
06	配气座 Valve Sea	2.1 Kg	01-QL40-06	14	钻头 Drill Bit		01-QL40-14
07	内缸 Inner Cylinder	2.45 Kg	01-QL40-07				
08	活塞 Piston	8.8 Kg	01-QL40-08				

技术参数 / Technical parameters

总长 (不含钻头) Length(Less bit)	总重 Weight	冲击器外径 Outer diameter	接头螺纹 Connection Thread	钻头钎柄 Bit Shank	钻孔范围 Hole Range
1102mm	43.7Kg	φ 99mm	API2 3/8"REG	QL40	φ 110- φ 135mm
适用气压 Work Pressure	1.0-2.2 Mpa	推荐转速 Recommended rotation speed	30-60 r/min	耗风量 / Air Consumption	
				1.0Mpa	1.8Mpa
				5.5m ³ /min	10m ³ /min

QL50

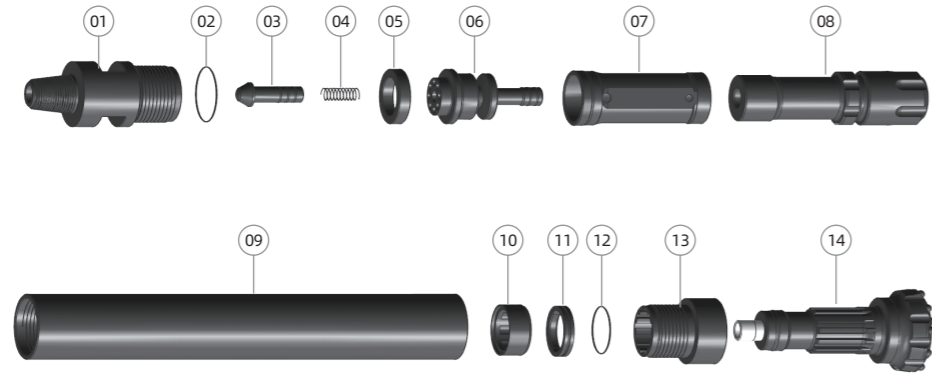


Ref.	部件 Parts	单重 Weight	件号 Part No.	Ref.	部件 Parts	单重 Weight	件号 Part No.
01	接头 Top Sub	14.7 Kg	01-QL50-01	09	外缸 Piston Case	24.7 Kg	01-QL50-09
02	O形圈 "O"Ring	0.02 Kg	01-QL50-02	10	衬套 Guided Sleeve	1 Kg	01-QL50-10
03	逆止阀 Check Valve	1 Kg	01-QL50-03	11	卡环 Retainer Ring	0.6 Kg	01-QL50-11
04	弹簧 Spring	0.06 Kg	01-QL50-04	12	O形圈 "O"Ring	0.01 Kg	01-QL50-12
05	橡胶垫rubber Buffer	0.2 Kg	01-QL50-05	13	卡钎套 Drive Chuc	5.6 Kg	01-QL50-13
06	配气座 Valve Sea	4.1 Kg	01-QL50-06	14	钻头 Drill Bit		01-QL50-14
07	内缸 Inner Cylinder	4.4 Kg	01-QL50-07				
08	活塞 Piston	17 Kg	01-QL50-08				

技术参数 / Technical parameters

总长 (不含钻头) Length(Less bit)	总重 Weight	冲击器外径 Outer diameter	接头螺纹 Connection Thread	钻头钎柄 Bit Shank	钻孔范围 Hole Range
1154mm	73.5Kg	φ 126mm	API2 3/8"REG	QL50	φ 135- φ 155mm
适用气压 Work Pressure	1.0-2.5 Mpa	推荐转速 Recommended rotation speed	30-60 r/min	耗风量 / Air Consumption	
				1.0Mpa	1.8Mpa
				9m ³ /min	15m ³ /min

QL60

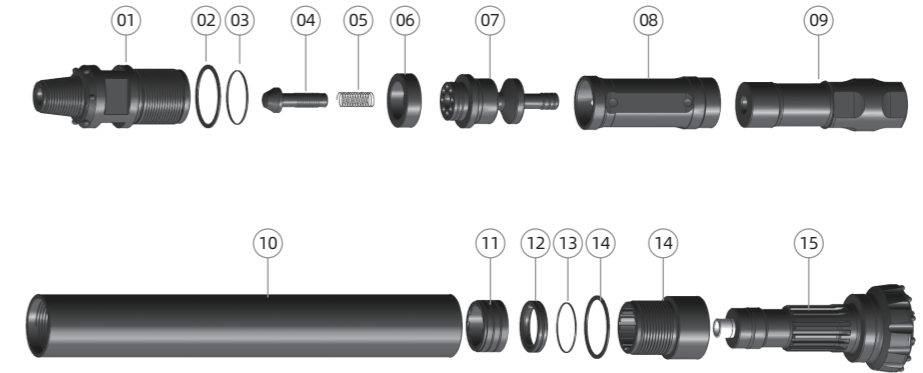


Ref.	部件 Parts	单重 Weight	件号 Part No.	Ref.	部件 Parts	单重 Weight	件号 Part No.
01	接头 Top Sub	23 Kg	01-QL60-01	09	外缸 Piston Case	39 Kg	01-QL60-09
02	O形圈 "O"Ring	0.02 Kg	01-QL60-02	10	衬套 Guided Sleeve	1.1 Kg	01-QL60-10
03	逆止阀 Check Valve	0.08 Kg	01-QL60-03	11	卡环 Retainer Ring	0.6 Kg	01-QL60-11
04	弹簧 Spring	0.05 Kg	01-QL60-04	12	O形圈 "O"Ring	0.02 Kg	01-QL60-12
05	橡胶垫rubber Buffer	0.3 Kg	01-QL60-05	13	卡钎套 Drive Chuck	6.3 Kg	01-QL60-13
06	配气座 Valve Sea	6.2 Kg	01-QL60-06	14	钻头 Drill Bit		01-QL60-14
07	内缸 Inner Cylinder	5 Kg	01-QL60-07				
08	活塞 Piston	23.5 Kg	01-QL60-08				

技术参数 / Technical parameters

总长 (不含钻头) Length(Less bit)	总重 Weight	冲击器外径 Outer diameter	接头螺纹 Connection Thread	钻头钎柄 Bit Shank	钻孔范围 Hole Range
1211mm	105Kg	φ 148mm	API3 1/2"REG	QL60	φ 158- φ 190mm
适用气压 Work Pressure	1.0-2.5 Mpa	推荐转速 Recommended rotation speed	30-60 r/min	耗风量/Air Consumption	
				1.0Mpa	1.8Mpa
				9m ³ /min	20m ³ /min

QL80



Ref.	部件 Parts	单重 Weight	件号 Part No.	Ref.	部件 Parts	单重 Weight	件号 Part No.
01	接头 Top Sub	42 Kg	01-QL80-01	09	活塞 Piston	41 Kg	01-QL80-09
02	垫片 Adjuster Shim	0.2 Kg	01-QL80-02	10	外缸 Piston Case	64 Kg	01-QL80-10
03	O形圈 "O"Ring	0.02 Kg	01-QL80-03	11	衬套 Guided Sleeve	2.9 Kg	01-QL80-11
04	逆止阀 Check Valve	1.3 Kg	01-QL80-04	12	卡环 Retainer Ring	1.2 Kg	01-QL80-12
05	弹簧 Spring	0.1 Kg	01-QL80-05	13	O形圈 "O"Ring	0.02 Kg	01-QL80-13
06	橡胶垫rubber Buffer	0.4 Kg	01-QL80-06	14	垫片 Adjuster Shim	0.2 Kg	01-QL80-14
07	配气座 Valve Sea	12.7 Kg	01-QL80-07	15	卡钎套 Drive Chuck	12 Kg	01-QL80-15
08	内缸 Inner Cylinder	9.1 Kg	01-QL80-08	16	钻头 Drill Bit		01-QL80-16

技术参数 / Technical parameters

总长 (不含钻头) Length(Less bit)	总重 Weight	冲击器外径 Outer diameter	接头螺纹 Connection Thread	钻头钎柄 Bit Shank	钻孔范围 Hole Range
1471mm	187Kg	φ 180mm	API4 1/2"REG	QL80	φ 195- φ 254mm
适用气压 Work Pressure	1.5-3.3 Mpa	推荐转速 Recommended rotation speed	30-60 r/min	耗风量/Air Consumption	
				1.8Mpa	2.4Mpa
				26m ³ /min	34m ³ /min